



LOCATION MAP



NIRALA INFRA TECH PRIVATE LIMITED

Corp. Office
H-61, 1st Floor, Sector-63,
Noida (U.P.) 201301

Site Office
GH-04, Techzone-IV,
Gr. Noida (West), U.P.

Web: www.niralaworld.com

Disclaimer: While every attempt has been made to ensure the accuracy of the plans shown, all measurements, positioning, fixtures, fittings and any other data shown are an approximate interpretation for illustrative purposes only and are not to scale. No responsibility is taken for any error, omission, miss-statement or use of data shown. The company reserves the right to make changes in the plans, specifications, dimensions and elevations without any prior notice.



The Most
Adorable Place



UNIK ADVERTISING | www.unikads.com

Artistic Impression

U.P. RERA REGISTRATION
NO. UPRERAPRJ265789

NIRALA ESTATE

2&3 BHK APARTMENTS-PHASE III
GH-04, TECHZONE-IV, G. NOIDA WEST

Nirala Estate is like living in at one of the most serene places. It's a home you will cherish. That's the beauty of Nirala Estate, inspired by the charm of modern and contemporary lifestyle.

Situated in one of the most sought after and fast developing localities of NCR Delhi, Nirala Estate is one gem of an apartment complex. Within easy reach from Delhi, Noida and Ghaziabad it is ensconced with sumptuous greenery and well-planned localities, reputed schools, state-of-the-art hospitals, multiplexes and malls are all within easy reach. You sure would love the place and all the facilities it offers. Rest assured that Nirala Estate would turn your life into one big joyous occasion.



Amenities That Suits Your Lifestyle



Commercial Plaza



Jacuzzi



Badminton Court



Swimming Pool



Lawn



Yoga / Meditation



Children Play Area



Open Gym

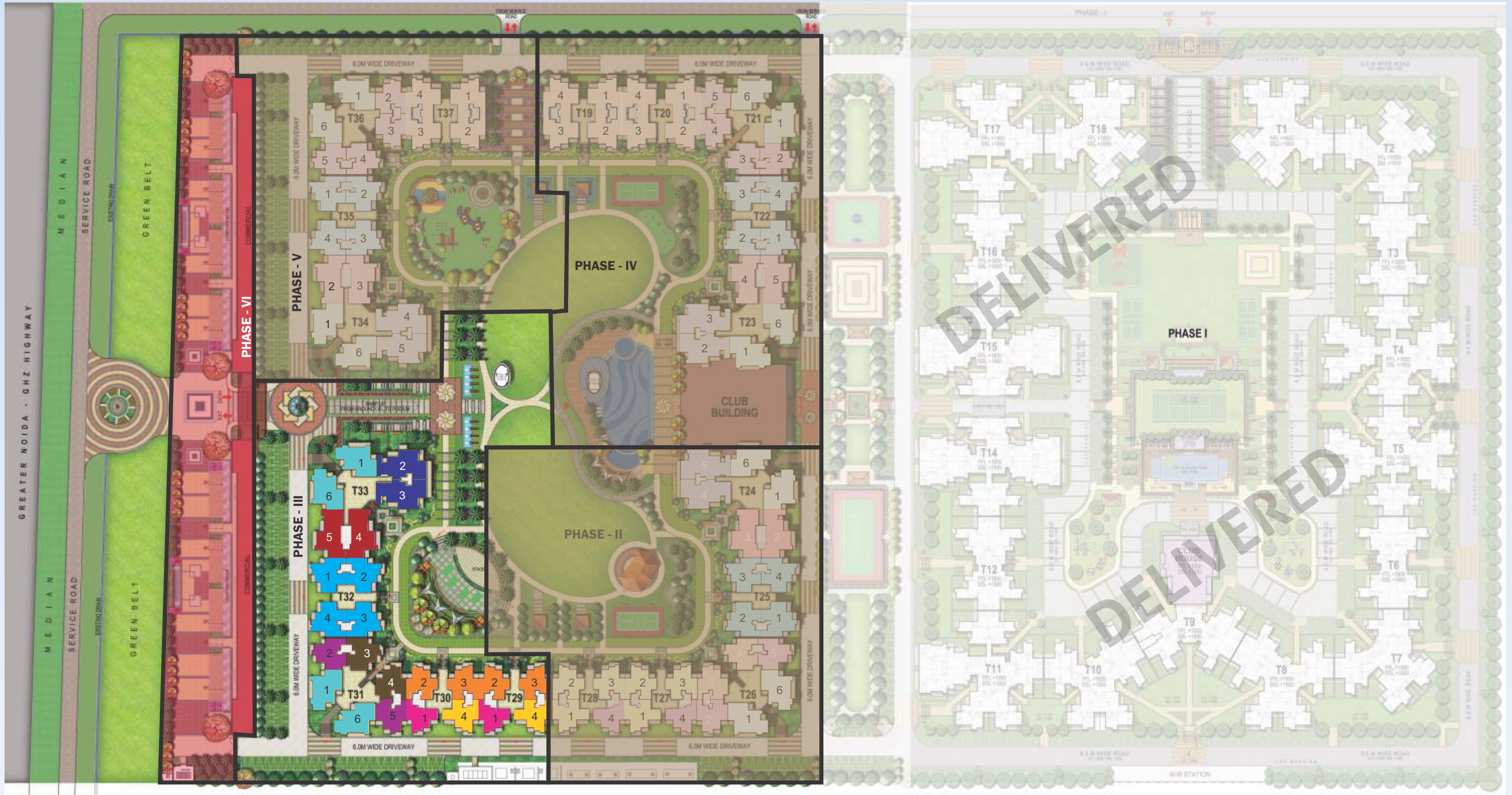
LAYOUT PLAN OF PHASE - III



Disclaimer: While every attempt has been made to ensure the accuracy of the plans shown, all measurements, positioning, fixtures, fittings and any other data shown are an approximate interpretation for illustrative purposes only and are not to scale. No responsibility is taken for any error, omission, miss-statement or use of data shown. The company reserves the right to make changes in the plans, specifications, dimensions and elevations without any prior notice.

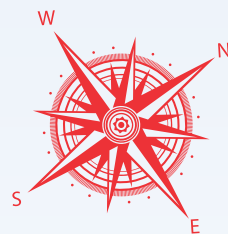
Disclaimer: While every attempt has been made to ensure the accuracy of the plans shown, all measurements, positioning, fixtures, fittings and any other data shown are an approximate interpretation for illustrative purposes only and are not to scale. No responsibility is taken for any error, omission, miss-statement or use of data shown. The company reserves the right to make changes in the plans, specifications, dimensions and elevations without any prior notice.

LAYOUT PLAN OF TOTAL PROJECT



Legends

- Water Cascade
- Bamboo Court
- Podium Plaza
- Entrance Water Features with Portals
- Reflexology Path
- Palm Gardens
- Central Green
- Children Play Area
- Tensile Canopies
- Sculpture Garden
- Badminton Courts
- Outdoor Gym
- Swimming Pool
- Kids Pool
- Club
- Jacuzzi
- Rain Dance Area
- Yoga/Meditation Garden
- Open Air Theater (O.A.T.)
- Open Parking



- | | | | | | |
|---------------|--|---------------|--|---------------|--|
| TYPE A | 2 BEDROOM + DRAWING/ DINING HALL + KITCHEN + 2 TOILETS | TYPE B | 3 BEDROOM + DRAWING/ DINING HALL + KITCHEN + 2 TOILETS | TYPE C | 3 BEDROOM + DRAWING/ DINING HALL + KITCHEN + 2 TOILETS |
| TYPE D | 3 BEDROOM + DRAWING/ DINING HALL + KITCHEN + 2 TOILETS | TYPE E | 3 BEDROOM + DRAWING/ DINING HALL + KITCHEN + 2 TOILETS | TYPE F | 3 BEDROOM + DRAWING/ DINING HALL + KITCHEN + 2 TOILETS |
| TYPE G | 3 BEDROOM + DRAWING/ DINING HALL + KITCHEN + 2 TOILETS (BIG) | TYPE H | 3 BEDROOM + DRAWING/ DINING HALL + KITCHEN + 3 TOILETS | TYPE I | 3 BEDROOM + DRAWING/ DINING HALL + KITCHEN + 4 TOILETS + SERVANT |

Note: The facilities & amenities mentioned above are part of different phase/project in total project, and will be available for use after development of respective phase/project.

Floor Plans



TYPE A



**2 BEDROOM
+ 2 TOILET**

Carpet Area
55.07 Sq.mt. / 592.78 Sq.ft.
Builtup Area
73.99 Sq.mt. / 796.45 Sq.ft.
Super Area
92.44 Sq.mt. / 995.00 Sq.ft.

Disclaimer: While every attempt has been made to ensure the accuracy of the plans shown, all measurements, positioning, fixtures, fittings and any other data shown are an approximate interpretation for illustrative purposes only and are not to scale. No responsibility is taken for any error, omission, miss-statement or use of data shown. The company reserves the right to make changes in the plans, specifications, dimensions and elevations without any prior notice.

Floor Plans



TYPE B



**3 BEDROOM
+ 2 TOILET**

Carpet Area
68.19 Sq.mt. / 734.01 Sq.ft.
Builtup Area
87.58 Sq.mt. / 942.66 Sq.ft.
Super Area
113.81 Sq.mt. / 1225.00 Sq.ft.

Disclaimer: While every attempt has been made to ensure the accuracy of the plans shown, all measurements, positioning, fixtures, fittings and any other data shown are an approximate interpretation for illustrative purposes only and are not to scale. No responsibility is taken for any error, omission, miss-statement or use of data shown. The company reserves the right to make changes in the plans, specifications, dimensions and elevations without any prior notice.

Floor Plans



TYPE C



**3 BEDROOM
+ 2 TOILET**

Carpet Area
70.78 Sq.mt. / 761.89 Sq.ft.
Builtup Area
91.04 Sq.mt. / 979.97 Sq.ft.
Super Area
116.13 Sq.mt. / 1250.00 Sq.ft.

Disclaimer: While every attempt has been made to ensure the accuracy of the plans shown, all measurements, positioning, fixtures, fittings and any other data shown are an approximate interpretation for illustrative purposes only and are not to scale. No responsibility is taken for any error, omission, miss-statement or use of data shown. The company reserves the right to make changes in the plans, specifications, dimensions and elevations without any prior notice.

Floor Plans



TYPE D



**3 BEDROOM
+ 2 TOILET**

Carpet Area
70.78 Sq.mt. / 761.89 Sq.ft.
Builtup Area
90.83 Sq.mt. / 977.74 Sq.ft.
Super Area
116.13 Sq.mt. / 1250.00 Sq.ft.

Disclaimer: While every attempt has been made to ensure the accuracy of the plans shown, all measurements, positioning, fixtures, fittings and any other data shown are an approximate interpretation for illustrative purposes only and are not to scale. No responsibility is taken for any error, omission, miss-statement or use of data shown. The company reserves the right to make changes in the plans, specifications, dimensions and elevations without any prior notice.

Floor Plans



TYPE E



**3 BEDROOM
+ 2 TOILET**

Carpet Area
69.88 Sq.mt. / 752.20 Sq.ft.
Builtup Area
91.78 Sq.mt. / 987.90 Sq.ft.
Super Area
117.99 Sq.mt. / 1270.00 Sq.ft.

Disclaimer: While every attempt has been made to ensure the accuracy of the plans shown, all measurements, positioning, fixtures, fittings and any other data shown are an approximate interpretation for illustrative purposes only and are not to scale. No responsibility is taken for any error, omission, miss-statement or use of data shown. The company reserves the right to make changes in the plans, specifications, dimensions and elevations without any prior notice.

Floor Plans



TYPE F



**3 BEDROOM
+ 2 TOILET**

Carpet Area
78.26 Sq.mt. / 842.37 Sq.ft.
Builtup Area
100.75 Sq.mt. / 1084.43 Sq.ft.
Super Area
128.67 Sq.mt. / 1385.00 Sq.ft.

Disclaimer: While every attempt has been made to ensure the accuracy of the plans shown, all measurements, positioning, fixtures, fittings and any other data shown are an approximate interpretation for illustrative purposes only and are not to scale. No responsibility is taken for any error, omission, miss-statement or use of data shown. The company reserves the right to make changes in the plans, specifications, dimensions and elevations without any prior notice.

Floor Plans



TYPE G

**3 BEDROOM
+ 2 TOILET**

Carpet Area
85.70 Sq.mt. / 922.51 Sq.ft.
Builtup Area
111.69 Sq.mt. / 1202.20 Sq.ft.
Super Area
142.60 Sq.mt. / 1535.00 Sq.ft.

Disclaimer: While every attempt has been made to ensure the accuracy of the plans shown, all measurements, positioning, fixtures, fittings and any other data shown are an approximate interpretation for illustrative purposes only and are not to scale. No responsibility is taken for any error, omission, miss-statement or use of data shown. The company reserves the right to make changes in the plans, specifications, dimensions and elevations without any prior notice.

Floor Plans



TYPE H

**3 BEDROOM
+ 3 TOILET**

Carpet Area
92.62 Sq.mt. / 996.95 Sq.ft.
Builtup Area
119.53 Sq.mt. / 1286.64 Sq.ft.
Super Area
152.82 Sq.mt. / 1645.00 Sq.ft.

Disclaimer: While every attempt has been made to ensure the accuracy of the plans shown, all measurements, positioning, fixtures, fittings and any other data shown are an approximate interpretation for illustrative purposes only and are not to scale. No responsibility is taken for any error, omission, miss-statement or use of data shown. The company reserves the right to make changes in the plans, specifications, dimensions and elevations without any prior notice.

Floor Plans



TYPE I

**3 BEDROOM +
4 TOILET + STUDY**

Carpet Area
107.06 Sq.mt. / 1152.40 Sq.ft.
Builtup Area
139.59 Sq.mt. / 1502.53 Sq.ft.
Super Area
176.24 Sq.mt. / 1897.00 Sq.ft.

Disclaimer: While every attempt has been made to ensure the accuracy of the plans shown, all measurements, positioning, fixtures, fittings and any other data shown are an approximate interpretation for illustrative purposes only and are not to scale. No responsibility is taken for any error, omission, miss-statement or use of data shown. The company reserves the right to make changes in the plans, specifications, dimensions and elevations without any prior notice.



Artistic Impression

NIRALA
ESTATE
2&3 BHK APARTMENTS-PHASE III
GH-04, TECHZONE-IV, G. NOIDA WEST

Specifications

Flooring

- Vitrified tiles 2'*2' in Drawing Room, Kitchen, Study Room, and all Bedrooms.
- Ceramic tiles in Bathrooms and Balconies.

Wall & Ceiling Finish

- Finished walls & ceiling with putty and Plastic Paint in pleasing shades.

Kitchen

- Granite working top & stainless steel sink single bowl with drain board.
- 2'-0' dado above the working top by ceramic tiles.

Toilets

- Ceramic tiles on walls upto door level.
- White sanitary ware of reputed brand or imported.
- CP fitting of reputed brand or imported.

Doors & Windows

- External doors & windows – Composite Metal/UPVC/ aluminium powder coated.
- Internal door-frames – Composite Metal frames/Marandi or equivalent wood frames.
- Internal door – Skin moulded door.

Electrical's

- Copper wire in PVC conduits with MCB supported circuits.

Power Backup

- 100% DG power back-up for all common areas.
- Upto 100% DG power back-up available to individual flat buyer on paid basis as agreed at the time of booking.

Security System

- Secured gated community.

Lift

- High speed passenger elevators.

Lift, Lobby & Staircases

- Lift lobby floor and staircase combination of one or more of marble / granite / vitrified tiles.

Disclaimer: While every attempt has been made to ensure the accuracy of the plans shown, all measurements, positioning, fixtures, fittings and any other data shown are an approximate interpretation for illustrative purposes only and are not to scale. No responsibility is taken for any error, omission, miss-statement or use of data shown. The company reserves the right to make changes in the plans, specifications, dimensions and elevations without any prior notice.